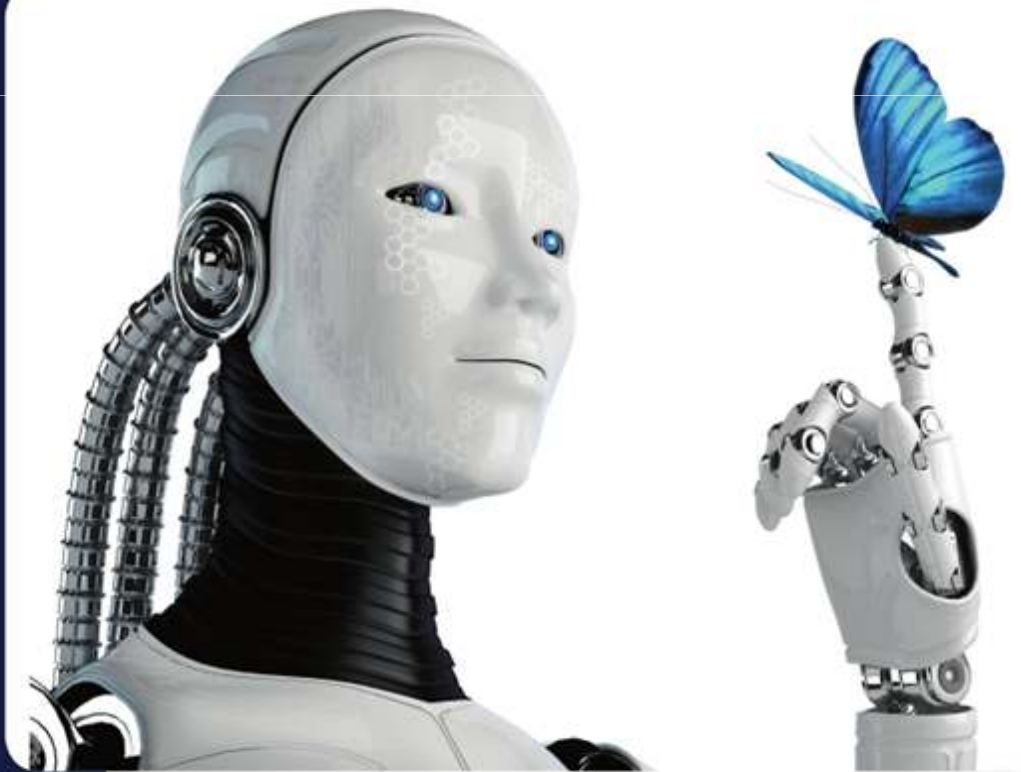




ICR

Newsletter Jan, 2017



Hot issue

- The new ICR Gimpo-Office Building Completion
- 2016 Korea Accreditation Board Annual assessment result
- 2016 Customer satisfaction survey Evaluation
- Secondary lithium battery safety test
- On-site EMC Test
- Updated IEC and EMC specifications List
- In-vitro Diagnosis MD Seminar



모든 기업은 항상 더 나은 발전과
밝은 미래를 향해 전진 하고 있습니다.

하지만 급변하는 시대에 한 단계 더 나아가기 위해서는 기업의 노력이 절실히 필요합니다.

이에 호응하기 위해서 발전 및 지속경영을 추구하는 고객의 요구에 부응하고자 ICR은 '고객 만족이 최고 목표'임을 자부하며 끊임없이 연구하고 있습니다. 또한 최고의 경쟁력은 "상호간의 신뢰"임을 상기해 왔습니다.

ICR은 시험평가와 인증지원을 통해 검사, 검증, 시험 및 시스템인증 등 고객 여러분의 든든한 국내/해외인증 전문 파트너로서 국내 최초의 One-Stop Service 인증기관 입니다.

ICR의 신뢰할 수 있는 변화와 혁신을 함께하시어 고객 여러분의 스마트하고 풍요로운 내일을 약속 드립니다.

The new ICR Gimpo-Office Building Completion



On 20 Dec. 2016 Approval of the new ICR Gimpo-office building (Completion) use



The new ICR building (Location : Gimpo-Hagun 4 General Industrial Complex) was approved for use on December 20, 2016. The new ICR building is composed of the **main building (6 floors, 9,669.64 m² (2,930py))** and **attached building (1st floor, 658.11 m² (200py))**. The land area is 2,000py and car parking is available for over 150 cars.

2016 Korea Accreditation Board Annual assessment result



2016 KAB Surveillance assessment (the office assessment in June and witness assessment in October) was successfully completed.

The assessment was conducted with including transition assessment of **ISO 9001:2015, ISO 14001:2015, and ISO 17021-1:2015.**

Based on the assessment result, the transition was completed successfully.

As a result, ICR provides following scope of audit service. (IAF code base)

QMS	01, 03, 04, 05, 06, 07, 08, 09, 12, 13, 14, 15, 16, 17, 18, 19, 22, 23, 24, 25, 28, 29, 30, 31, 32, 33, 34, 35, 36, 37, 38, 39
EMS	01, 03, 04, 05, 06, 07, 08, 09, 12, 13, 14, 15, 16, 17, 18, 19, 22, 23, 24, 25, 28, 29, 30, 31, 32, 33, 34, 35, 36, 37, 38, 39

The KAB scheme of audit services for ISO 9001:2015 and ISO 14001:2015 will be provided as soon as the accreditation certificate is issued.

Detailed schedule will be informed at the ICR web site (<http://icrqa.com>).

ICR sincerely make a promise to do ICR's best effort to become an improving certification body by taking the result of accreditation audit as a chance to develop. Thank you very much.

2016 Customer satisfaction survey Evaluation



Based on the 'Instruction on Customer Satisfaction(QI-20)',
2016 customer satisfaction survey evaluation was performed on 23rd November, 2016.

The 200 of evaluation subjects were randomly sampled from the valuable opinions which were submitted by the certified clients who were audited from 1st January 2016 to 23rd November 2016.

According to the analysis data(standard error ± 0.52 , reliability 91%) for total 13 question,

the customers showed more than 90% of high level of satisfaction for every questions.

ICR could attain encouraging result by customer's favor and support in 2016.

ICR greatly appreciates for customer's support.

ICR will do our best to become the certification body which is keep improving step by step.

Secondary lithium battery safety test



The days all things are powered by batteries, are coming

Digital cameras, smart phones, Internet-related devices, electric vehicles and solar power have in common that they all use reusable batteries or energy storage devices (ESS). As the development of product, the importance of batteries through the convergence of various technologies is on the rise and its safety and performance must be preceded.

❖ Equipment Introduction



< Crush & Nail penetration Test > < Thermal Abuse Chamber > < Altitude Simulation >

Electric Hydraulic ram, Max 15 kN	Temperature : Max. 200 °C	Altitude : Max. 16,500 m (0.8 kPa)
Speed : 1 ~ 55 mm/s	Heating Rate : (3 ~ 7) °C/min	
[Applicable Test Standards]	[Applicable Test Standards]	[Applicable Test Standards]
IEC62133(JIS8712), IEC62281, UN DoT, UL1642	IEC62133(JIS8712), UL1642,	IEC62133(JIS8712), IEC62281, UL1642

We are always striving to satisfy customers' needs by providing safety and performance services based on domestic and international standards of small and medium size batteries.

On-site EMC Test



On site EMC Test

ICR provides field test service for equipments that are difficult to move due to various reasons **such as large size, hard to install, and industrial equipment.**



The field test service is visiting on place where the immovable equipments are Installed and we go all places needed for EMC test as well as KCs and CE certification.

※ Contact us : **ICR +82-2-6351-9002**
Head Manager Young-sik Kim : kys@icrqa.com
Team Manager Seok-gwang Yeo : sky@icrqa.com

Updated IEC and EMC specifications List



List of EMC standards added by IEC

Recently, IEC has updated the EMC standard. The list is as follows.

규격 번호	규격 내용
IEC 62040-2:2016 PRV, Ed. 3.0	Uninterruptible power systems (UPS) – Part 2: Electromagnetic compatibility (EMC) requirements
CISPR 25:2016 PRV, Ed. 4.0	Vehicles, boats and internal combustion engines – Radio disturbance characteristics – Limits and methods of measurement for the protection of on-board receivers
CISPR 16-1-5/AMD1:2016 PRV	Amendment 1 – Specification for radio disturbance and immunity measuring apparatus and methods – Part 1-5: Radio disturbance and immunity measuring apparatus – Antenna calibration sites and reference test sites for 5 MHz to 18 GHz
CISPR 16-2-3:2016, Ed. 2.0	Specification for radio disturbance and immunity measuring apparatus and methods – Part 2-3: Methods of measurement of disturbances and immunity – Radiated disturbance measurements
CISPR 16-2-3:2016 RLV, Ed. 4.0	Specification for radio disturbance and immunity measuring apparatus and methods – Part 2-3: Methods of measurement of disturbances and immunity – Radiated disturbance measurements
IEC 62228-2:2016 PRV, Ed. 1.0	Integrated circuits – EMC evaluation of transceivers – Part 2: LIN transceivers

The Radio Equipment Directive (RED) 2014/53/EU is mandatory as from June 13, 2017.

Products that are released on the European market on that date must apply the **Radio Equipment Directive (RED)**.

Please note that the R&TTE guidelines are no longer valid.

In-vitro Diagnosis MD Seminar

(Korea University Guro Hospital Medical Devices Support Center)



KISC, Korea University Guro Hospital Medical Devices support Center, supports various areas from research & development to clinical evaluation (Performance evaluation) for In-vitro diagnosis medical devices and medical devices to medical devices researchers and manufacturers.

ICR participated in the monthly seminar held by KISC subject to 'Introduction of Certification and related Standards for IVD' in Korean University Guro Hospital meeting room on 20th Dec. 2016. There were more than 30 numbers of participants including Dr. professors, doctors, administration staffs and graduate students. And they got a seminar for **definition of IVD, conformity assessment procedures, applied standards and example of IVD accordance with Korean Law of medical devices.**



We are going to get more close cooperation with KISC in clinical requirements and others of medical devices for our clients.

www.icrqa.com

ICRO-31/R20161125 본 문서는 법률 제 14088호 저작권법의 보호대상이며, ICR의 지적 자산으로 불법 편집 및 복사를 금합니다.

Address : 912~914, E&C Dream Tower B/D, 146, Seonyu-ro, Yeongdeungpo-gu, Seoul, South Korea (07255)

Company Id No : 110111-243147
Tax & VAT Id No : 105-86-35114

Tel : (+82)2-6351-9001~5 / Fax : (+82)2-6351-9007
Home page : www.icrqa.com