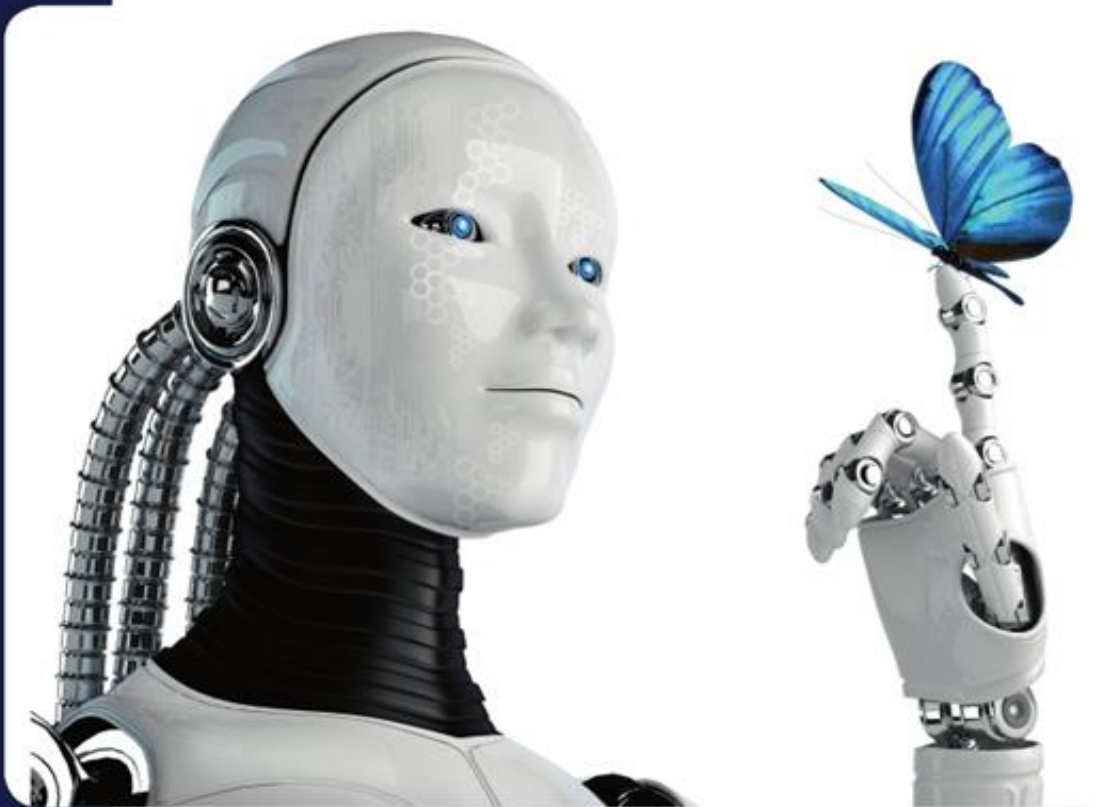


Newsletter

June, 2023



ICR



목 차

1. ISO 37301 Compliance Management System
2. SPS-C KBIA-10104-05-7488 Battery test
3. Installation of additional battery module cyclers
4. Education for KCs and CE certification of machinery
5. RRA Notification No. 2023-6

**Public notice on the suitability evaluation of
broadcasting and communication equipments,
etc**



ISO 37301 Compliance Management System



▣ Regarding the Compliance Management System

ISO 37301 is a CMS (Compliance Management System), an international standard that includes and strengthens new requirements standards in the existing ISO 19600:2014 by the International Organization for Standardization.

ISO 37301 is a management system that provides a structured approach to meet all compliance obligations, such as laws, regulations, licenses, and internal policies and procedures that organizations are obliged to comply with.



ISO 37301 Compliance Management System



■ Effect of ISO 37301

- 1) Compliance management system enables organizations to demonstrate a commitment to comply with applicable laws and regulations, regulatory requirements, industry norms and organizational standards, as well as good governance standards, generally accepted best practices, ethics and community expectations.
- 2) By operating an effective compliance management system, the organization can provide trust to stakeholders by abiding by sound organizational governance and ethical standards.
- 3) Compliance establishes a framework for identifying and preventing bribery risks. This helps prevent bribery and develops the necessary policies, procedures, training and monitoring systems.

ISO 37301 Compliance Management System



■ Relationship between ISO 37301 and ESG

Organizations can improve their performance in terms of ESG by establishing and operating a compliance management system.

As ISO 37301 helps to effectively manage an organization's business processes and strengthen governance, it can have a positive impact on a company's ESG assessment.

ESG is a metric that evaluates how an organization operates in terms of environmental, social and governance aspects, while ISO 37301 helps organizations manage regulatory compliance and implement processes to ensure compliance. It can help strengthen organizational accountability and transparency and promote sustainable operations.

ISO 37301 Compliance Management System



■ ICR_ISO 37301

Currently, ICR has been recognized by the Korean accreditation body (KAB), and provides reliable certification audits to customers by assigning qualified and verified auditors.

We promise to our customers that we provide certification services that can be of practical help to business management, rather than certifications that companies realistically prepare and consume time for.

Inquiries

System Certification Div. / Lee, Jae-Min
T. 070-5083-2612 / lee2750@icrqa.com

■ SPS-C KBIA-10104-05-7488

SPS-C KBIA-10104-05-7488 is a **thermal runaway test method of lithium secondary battery cell** established by the Korea Battery Industry Association on March 31, 2022.

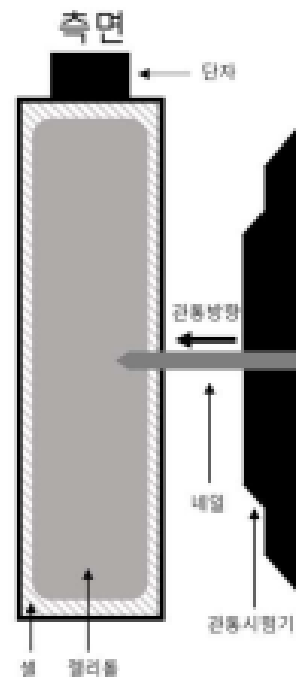
■ Test methods

After adjusting SOC of the cell, three methods are suggested.

- 1) Heating by heater,
- 2) Nail penetration
- 3) Overcharging



<example of use about heater>



<example of Nail penetration>

Test methods	Detailed items by test methods
Heating	<ul style="list-style-type: none">• Installation : outside or inside of cell• Type : heating pad, panel, etc.• Shape : film heater, ceramic heater, etc.• Heating area : no larger than area of cell surface and larger than 50 % of cell surface• Speed : (5±2) °C/min
Nail penetration	<ul style="list-style-type: none">• Diameter : 1~3 mm• Shape of tip : circular cone, angle(20-40°)• Speed : not more than 2 mm/s• Material: SUS, SKD-11, etc.
Overcharge	<ul style="list-style-type: none">• Current : Recommended by cell manufacturer

■ If you have any inquiry about battery testing and certification service as well as KMVSS, please feel free to contact our Battery Testing Center.

 **Inquiries**

Battery Testing Center / Yang, Chul-Ho
T. 02-6351-9003 / yangch@icrqa.com

Installation of additional battery module cyclers



- Additional battery module cyclers and chambers for performance test were installed.
 - **Module cycler: 12 channels (200 V, 500 A)**
 - **1.2m test chamber: Temp&humid chamber 6 EA**
- It will be available to use in May due to pre-operating inspection and calibration. Previously, 8 channels and 4 chambers were operated as module performance tests, so a **total of 20 channels and 10 chambers can be used for module performance tests.**

ICR Battery module performance tests



 **Inquiries**

Battery Testing Center / Yang, Chul-Ho

T. 02-6351-9003 / yangch@icrqa.com

Education for KCs and CE certification of machinery



- ICR conducted training under **the theme of KCs and CE Certification of Hazardous Risk Mechanical Equipment** to prevent compliance risks by securing the inspection standards capabilities of **LG Innotek safety managers** for two days.
- **The training curriculum** was conducted as follows.
 - CE certification and domestic certification guidance,
 - KCs,
 - Machinery Directive Requirements,
 - EN ISO 12100, EN 60204-1



Education for KCs and CE certification of machinery



- After the training, a satisfaction survey was conducted through a survey, and overall, the education was evaluated to be satisfactory.
- Skilled ICR experts will hold continuous training courses to help clients understand certification easily.

 **Inquiries**

Industrial Safety Center / Park, Hyun-Jun
T.070-5083-2625 / phj@icrqa.com

Public notice on the suitability evaluation of broadcasting and communication equipment, etc



National Radio Research Agency Notification No. 2023-6

「**Notice on the Suitability Evaluation of broadcasting and communication equipment, etc.**」 under Articles 58-2 to 58-4 of the Radio Act and Articles 77-2 to 77-8 of the Enforcement Decree of the same Act shall be revised and announced as follows.

April 18, 2023

Director of the National Radio Research Agency

■ 1. **Compatibility assessment for wireless equipments is complete** (Article 15 (1) of the Notice)

1.1 **Conformity-certified equipments radio capability added**

(Laptops certified with Wifi 6) + Wifi 6e (6 GHz frequency band)

Conformity certification equipment

Laptops certified as Wifi 6
(2.4 GHz, 5 GHz frequency band)
(device code: LARN5, LARN8)



Add wireless functionality

Wifi 6e (6 GHz frequency band)
radio function added
(device code: LARN5B added)

In the above case, you can report the change!

Public notice on the suitability evaluation of broadcasting and communication equipment, etc



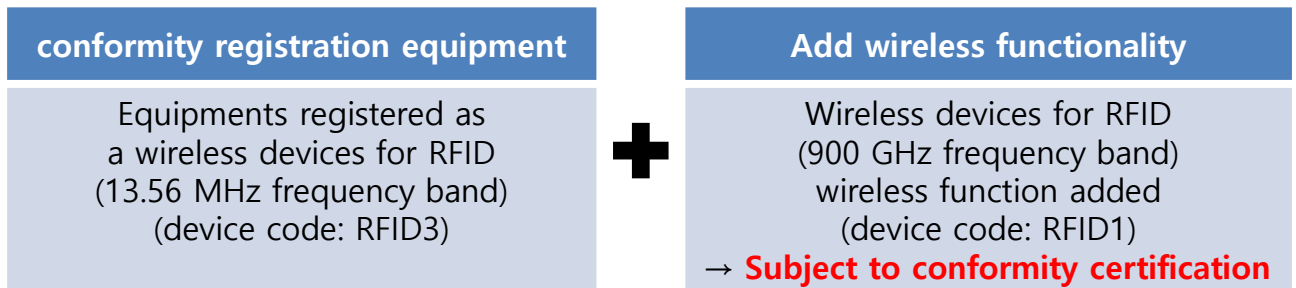
※ after the revision

Add wireless functionality to equipments that has completed a conformity assessment

- It is possible by reporting changes (regardless of whether or not it affects the format symbol)
- Only new ones are available before the revision, and changes can be reported after the revision.

1.2 If it is impossible to report the change

(conformity registration equipments + wireless function added = conformity certification equipments)



In the above case, **change notification is not possible!**

Public notice on the suitability evaluation of broadcasting and communication equipment, etc



- ※ Add wireless functionality to equipment that has completed registration of conformity → If the conformity evaluation type is changed (conformity registration → conformity certification) → Change not reported, new conformity certification is possible

■ 2. Diversification of manufacturing timing display methods

(Notification Schedule 5)

2.1 Before revision

- Trade name, equipment name, model name, year of manufacture, manufacturer and country of manufacture
(Method of displaying manufacturing time: Marked only as the year and month of manufacture)

After revision

- Trade name, equipment name, model name, lot number, manufacturer and country of manufacture
(Manufacturing timing display method : **Lot numbers** consisting of a combination of manufacturing year and year of manufacture, indications that the manufacturer can prove the manufacturing year, etc)

Public notice on the suitability evaluation of broadcasting and communication equipment, etc



※ In the conformity evaluation mark, the 'time of manufacture' should be indicated only by the year of manufacture, but it can also be indicated by the lot number and the mark that the manufacturer can prove the year of manufacture!

2.2 Points to Note for Marking the Time of Manufacture

If the consumer cannot know the date of manufacture by looking at the information that shows the time of manufacture, the user's manual, packaging, and Internet homepage should display the date of manufacture separately or provide information to prove the date of manufacture.

 **Inquiries**

EMC&RF Test Center / Son, Min-Gi
T. 070-5081-0023 / thsalsrl@icrqa.com